

NEW



AGRI LOADALL | 550-80/560-80

Gross power: 93–108kW (125–145hp) | Lift capacity: 4,999kg – 6,000kg | Lift height: 7.9m – 8.1m





40
years of
JCB LOADALL

A JCB agricultural telehandler is shown in the process of loading a large red trailer with potatoes. The telehandler's bucket is raised, pouring a large quantity of potatoes into the trailer. The trailer is parked on a wet, muddy surface, and a large pile of potatoes is visible in the foreground. The background shows a cloudy sky and some industrial structures.

A Proud Agricultural Heritage

Since 1977 JCB have revolutionised material handling within the agricultural sector. JCB developed the first dedicated agricultural telehandler that transformed loading, lifting, placing and moving bulk material.

Today, JCB continue to revolutionise the industry by introducing the AGRI Pro with the new DualTech Variable Transmission (DualTech VT), the world's first 2-in-1 transmission, designed specifically for agricultural telehandlers. The DualTech VT combines the superior high-speed efficiency and towing ability of a JCB Powershift Transmission with the low-speed control advantages of hydrostatic drive.

JCB Loadalls cater for every farming requirement – farmers can choose between the AGRI Plus, AGRI Super and new AGRI Pro models. All variants have a number of renowned machine innovations, such as our Smart Hydraulics package that combine with differing gearbox or engine options designed to give you the best machine for your farm.

Putting it simply, since 1977 the JCB agricultural telehandler has evolved to answer a simple requirement of the farming community, move more material for less money in the quickest possible time. That is why, if you are looking for a true agricultural telehandler, there is only one.

SMART TECHNOLOGY FROM JCB.

JCB'S SMART HYDRAULICS PACKAGE IMPROVES CYCLE TIME BY 19% WHILE DELIVERING A 15% REDUCTION IN THE AMOUNT OF FUEL CONSUMED.

Introducing JCB Smart Hydraulics.

JCB's Euro Stage IV/Tier 4 Final and UN Stage 3 AGRI Loadalls are enhanced by JCB's new Smart Hydraulics package. High flow auxiliaries and a seat-mounted servo joystick brings improved comfort and productivity. These features are in addition to JCB's unique regenerative hydraulics system which improve cycle times by up to 19%, while delivering a 15% reduction in the amount of fuel used to move the same amount of material.

Also part of the Smart Hydraulics package are end-of-stroke damping on boom lift and retraction, and a new 'auto' mode for the boom's SmoothRide System (SRS). The Bucket Control System eliminates the need for an operator to make repeated joystic movements, whilst changing attachments is also easier thanks to an auxiliary hydraulics venting valve, operated by a button in the cab.



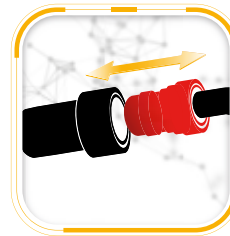
Regenerative hydraulics.

1 Making the most out of every drop of precious fuel, gravitational forces are harnessed to make boom lowering and retract more energy efficient and productive.



Auto bucket control.

4 JCB's auto bucket control technology makes it easier to meter out or fully empty material from your bucket or manure fork via a feature button on the joystick.



Hydraulic auxiliary venting.

2 The cab boasts a pressure release button for front and rear hydraulic services ensuring quick and safe changeover of attachments.



High flow auxiliary.

5 This increases the auxiliary power for greater productivity on attachments demanding high flow. This feature also helps to keep the hydraulic oil cooler.



Boom end damping.

3 Improved material retention and smoother cycle work with boom end damping on lift and retract.



Optional auto SmoothRide System.

6 Auto SRS engages at speeds of over 2.5mph / 4 kph. This improves load retention and when travelling at speed on roads and fields.



ULTIMATE PERFORMANCE, ULTIMATE PRODUCTIVITY.

THE AGRI LOADALL MAKES THE MOST EFFICIENT USE OF YOUR TIME AND MONEY. PRODUCTIVITY AND PERFORMANCE ARE CLASS-LEADING, WITH VERSATILITY, VISIBILITY AND FAST CYCLE TIMES IN ABUNDANCE, AS WELL AS UP TO 6000KG OF LIFT CAPACITY FOR SUPERB BULK RE-HANDLING.

Innovative lifting technology.

1 Regenerative hydraulics help to ensure the very fastest cycle times. Using gravity to lower the boom both time and precious fuel is saved during each work cycle.

Making moves.

2 The AGRI Loadall is extremely manoeuvrable; the compact wheelbase and large steering lock angles save you valuable time, especially where space is limited.

3 4WD is standard, so increased traction is assured at all times. 2WD is available at the flick of a switch too, minimising tyre wear and fuel use when roading. For added ease of operation the AGRI Pro offers an automatic changeover from 4WD to 2WD.

For improved performance on difficult terrain, opt for Limited Slip Differential, standard on the AGRI Pro.

JCB's new efficient EcoMAX Tier 4 Final// Euro Stage IV and UN Stage 3 engines produce its power and torque at low engine speeds for great responsiveness, and our wide range of Loadall models means you can find the perfect machine for your requirements.

Auto Smoothride System (SRS) engages at speeds of over 2.5mph/4km/h. This improves load retention and comfort (and, in turn, productivity) when travelling at speed on roads, tracks and fields. The system can now be manually engaged with the boom in any position.



Productive controls.

4 A selectable transmission dump on the foot brake allows superb multi-functioning and increased power during loading or rehandling, whilst the AGRI Pro offers hydrostatic inching capabilities through the brake pedal.

5 AGRI Loadalls have three selectable steer modes. There's two-wheel steer, which is ideal for high speed on the road; four-wheel steer for tight spaces; and crab-steer for manoeuvring close to walls and farm buildings. Operators can switch modes on the move without having to line the wheels up.

6 Joystick-mounted manual or automatic gear changes means you can shift gears, speed and direction quickly and easily with one ergonomic control. AGRI Super and AGRI Pro models also benefit from automatic gear changes. With the seat mounted joystick solution standard on Super and Pro models this gives great rough terrain performance. Optional on Plus models.

7 AGRI loadalls are fitted with auxiliary spools as standard, ensuring they can be used with a wide range of attachments, ensuring maximum versatility. The cab boasts a pressure release button for the front and rear hydraulic auxiliary services too. A constant flow auxiliary fitted as standard with twin auxiliary optional. High flow pipework gives greater flow to the boom, ideally suited to attachments demanding high flow such as silage defacers and straw spreaders. The JCB Q-Fit carriage makes attachment changing quick and easy, so choose from our extensive range of attachments to customise any machine for all applications.

JCB's auto bucket control technology makes it easier to meter out or fully empty material from your bucket or muck fork via a feature button on the joystick. Material is ejected quickly and in a controlled way.



4



5



6



7

A SOUND INVESTMENT.

THE 550-80 AND 560-80 ARE EXTREMELY EFFICIENT BOTH IN OWNERSHIP AND IN OPERATION. DESIGNED TO GIVE YOU THE MAXIMUM POSSIBLE RETURN ON YOUR INVESTMENT, THEY OFFER GREAT FUEL EFFICIENCY, UNPARALLELED RESALE VALUE AND LOW RUNNING COSTS.

EcoMAX efficiency.

1 JCB AGRI Loadalls are products of our Efficient Design programme, the upshot of which is that you can expect up to 18% fuel savings over our Tier 3 models. 125hp (93kW) and 145hp (108kW) JCB EcoMAX engines are fitted with a variable speed cooling fan that automatically reacts to ambient temperatures, adjusting fan speed to maximise fuel efficiency and reduce in cab noise levels.

2 The engine can be remapped to run on lower grade fuels, which means your machine can be resold across many different territories, with a corresponding boost to residual values.

3 An LED screen on the dash provides operators with useful information such as fuel consumption figures, DEF (Diesel Exhaust Fluid) level*, engine hours, Power Brake pressure and other additional information.

* Territory dependant, not applicable on UN Stage 3 variants.



EcoMAX produces its peak torque engine speeds as low as 1500 rpm for fuel-efficient matching of the transmission and hydraulics.



Hydraulic efficiency.

4 JCB's hydraulic regeneration system uses a unique pilot-operated counterbalance valve to harness gravitational force, making lowering and retracting the boom more efficient than ever. The system reduces cycle times by up to 20% and fuel consumption by up to 4.4%.

5 We believe that even high performance features should have economy at their heart. That's why our robust Z-bar linkage doesn't just offer an incredible 6.5 tonnes of tearout force; it also maximises bucket fill for superb efficiency in rehandling applications.

6 AGRI Super Loadalls are fitted with TorqueLock in 5th and 6th gears for greater speed, quicker journey times between farm and field, and reduced fuel consumption when roading. High back-off Power brakes reduce viscous drag during roading and rehandling, which improves fuel economy by up to 2%.

AGRI Pro Loadalls are fitted with direct mechanical drive from 2nd to 4th gears for even greater speed, better towing capabilities and hill climbing and further reduced fuel consumption when roading.

Low cost of ownership.

7 JCB's innovative Clean Burn technology is used to meet Tier 4 Final / Euro Stage IV and UN Stage 3 regulations without the need for a Diesel Particulate Filter. This means costly DPF replacement is never a worry.

Instead a JCB Loadall uses a sealed-for life SCR system*. Among the numerous benefits of this setup is the fact that there's no loss of productivity due to DPF regeneration. By investing in a JCB Loadall, you're investing in a machine that's sought-after all over the world for its legendary productivity and build quality. This well-earned reputation keeps residual values high.



4



5



6



7

* Territory dependant, not applicable on UN Stage 3 variants.

STRENGTH IN DEPTH.

WE UNDERSTAND THAT AGRICULTURAL WORK CAN BE INTENSIVE AND ARDUOUS. IT'S FOR THIS REASON THAT AGRI LOADALLS ARE BUILT TO BE AS TOUGH AS POSSIBLE, USING TOP QUALITY COMPONENTS AND INNOVATIVE MANUFACTURING PROCESSES TO ENSURE A LONG AND PRODUCTIVE SERVICE LIFE FROM YOUR MACHINE.

Built to last.

1 We've fitted a tough inverted U-shaped boom pressing with fully welded closing plates and large overlaps of over 1.0m. For extra strength, we've reduced the number of joints and stress points across our integrated boom nose and one-piece closing plate.

2 Heavy-duty axle feet help an AGRI Loadall to absorb the immense stresses generated during continuous heavy material re-handling applications. Keyhole castings hold the tilt and extension rams to further improve overall structural integrity.

Out of harm's way.

3 The bonnet is side-mounted and recessed to keep it out of harm's way.

4 Rear lights on these Loadalls fold up and away from potential hazards on-farm.

5 If you need added protection from falling objects, choose our front and top screen roof guards.



Passing the tests.

7 The AGRI Loadall range's stringent testing programme has included cold climate testing, prolonged high stress loading of the chassis, boom and other key components, as well as repeated transmission use over thousands of typical agricultural work cycles and intensive use on our new rolling road facility.

8 Because we make our own hydraulic rams, cabs, transmissions, engines, chassis and booms. JCB Loadalls benefit from perfect harmony of key components, bringing with it optimised reliability and performance.

9 Our hydraulic cylinders have friction-welded eye-ends for extra strength, plus all pivots use hardened pins. The centrally mounted lift, tilt and extension rams eliminate boom twisting and are held in place by centrally-mounted keyhole castings for even greater structural integrity.

10 We use state-of-the-art manufacturing processes such as robot machining, precision paint technology and innovative assembly techniques to achieve the very highest levels of quality.



The Tier 4 Final/Euro Stage IV and UN Stage 3 engine builds on the proven success of the JCB EcoMAX platform. Since the start of the engine program we have achieved over 200,000 hours of testing across the toughest applications and environments.



SMOOTH OPERATOR.

FOR AN AGRICULTURAL MACHINE TO PROVIDE MAXIMUM PRODUCTIVITY, IT NEEDS TO BE INTUITIVE AND COMFORTABLE TO OPERATE ACROSS A WIDE VARIETY OF CONDITIONS AND CLIMATES. THE JCB AGRI LOADALL RANGE PROVIDES THE MOST ERGONOMIC WORKING ENVIRONMENT AROUND, WITH FEATURES APLENTY TO HELP KEEP OPERATORS FOCUSED ALL DAY LONG.

In total control.

1 AGRI Loadalls are fitted with a fully proportional single lever servo joystick control for smooth and precise command of both boom and auxiliary functions. Changing gears and switching direction are all done via the joystick, making manoeuvres fast and easy.

2 Backlit switches ensure quick and accurate control recognition, even in the dark.

3 All operators from novices to experts will find JCB Loadalls easy to use; the cab interior is designed to be intuitive and uncomplicated, with clear instruments and a familiar automotive-style control layout.

4 The tilting steering column with telescopic adjustment helps operators to find the best possible driving position.



Comfort and convenience.

5 The AGRI Pro's DualTech VT automatically switches over from hydrostatic to Powershift allowing the operator to experience the best of the hydrostatic module's smooth directional changes as well as the effortless roading capabilities of the Powershift module.

To keep operators comfortable and focused, our 7-speed fan heater can help create the right working temperature all year round, from the depths of winter to hot harvesting days. Optional air conditioning makes it even easier to find the perfect cab temperature.

For comfort and support during boom operation, our AGRI Super and AGRI Pro models come with a seat mounted joystick.

6 Optional front and rear worklights give good all-round illumination, while our optional LED lights allow ultimate productivity in the dark. We even offer a rear towing hitch worklight option.

7 All-round visibility is excellent, courtesy of direct glazing and a large roof screen, as well as a low bonnet.



THE SAFER CHOICE.

JCB AGRI LOADALLS ARE EQUIPPED WITH A NUMBER OF STRINGENT SAFETY MEASURES TO HELP GUARD AGAINST ACCIDENTS. THERE'S ALSO A HIGH LEVEL OF SECURITY TECHNOLOGY INSTALLED.

Safety first.

1 Control is increased even further with automotive-inspired braking. This new system sees already class-leading braking performance enhanced with the introduction of power brakes, providing proportional braking throughout the pedal travel and resulting in improved braking effort and safe, stable stopping.

Adaptive Load Control technology automatically controls hydraulic operation, helping to maintain the longitudinal stability.

2 Excellent cab access, with three points of contact and ergonomically positioned grabs, handles and two foot steps.

Bystanders are safeguarded by our standard-fit reversing alarm.

Depending on territory, our Loadall security system is Thatcham-approved. The package comprises a Cesar Datatag (on UK vehicles), a JCB LiveLink telematics vehicle tracker, and an immobiliser.

3 The low boom profile and pivot means that operators get excellent rear visibility; there's also a full set of side and rear-view mirrors to enhance all-round visibility and safety compliance.

An AGRI Loadall has hose burst check valves (HBCVs) to protect the rams from collapse in the event of a hose failure.

Our factory-fit immobilisers can reduce your insurance premiums. They can be activated by keys or a 4-digit keypad, with automatic arming after a set time following engine shutdown.

Accidental operation is a thing of the past with our operator presence switch; this feature prevents vehicle movement whenever drivers leave their seats.

1



2



3

LESS SERVICING, MORE SERVICE.

KEEPING DOWNTIME TO A MINIMUM IS CRUCIAL TO ACHIEVING ULTIMATE PRODUCTIVITY, SO JCB LOADALLS HAVE LONG SERVICE INTERVALS AND, WHEN MAINTENANCE DOES NEED TO BE CARRIED OUT, IT'S AN EASY AND QUICK PROCESS.

Maintaining productivity.

- 1** All daily checks and greasing can be carried out at ground level; our optional centralised greasing system makes for quicker and easier servicing.
- 2** It's easy to fill both the diesel and DEF/AdBlue* tanks from ground level. Both tanks also have built-in pre-filters in the filler necks to guard against dirt and contaminants as well as separate keys to prevent cross contamination. Housed inside the DEF tank are DEF quality sensors.
- 3** The batteries are protected by a hinged and bolted door for easy access.
- 4** A dry lubricant system means our wear pads are extremely durable, with service intervals of 500 hours.
- 5** Every fluid filter (engine oil, hydraulic oil and fuel) is centrally located for fast, easy servicing. The air filter is easily accessed too, and its double-element design simplifies cleaning.

* Territory dependant, not applicable on UN Stage 3 variants.



We've equipped these AGRI Loadalls with a large, wide service bay that's accessed via a gas-assisted bonnet. This setup allows fast and easy inspection around three sides of the engine.

DRIVE THE REVOLUTION

DUALTECH VT

INTRODUCING THE WORLD'S FIRST AND ONLY 2 IN 1 TRANSMISSION (HYDROSTATIC AND POWERSHIFT), DESIGNED SPECIFICALLY FOR AGRICULTURAL TELEHANDLERS.

By combining the superior high-speed efficiency and towing ability of a JCB Powershift transmission with the low-speed control advantages of hydrostatic drive, the AGRI Pro's unique JCB DualTech VT provides the best of both worlds for operators who want maximum efficiency and productivity across a wide range of applications.

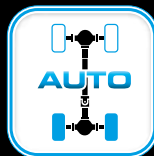
Designed specifically for the agricultural industry, the AGRI Pro offers a 25% productivity gain when handling and 16% when towing on the road, compared to competitor machines.

The AGRI Pro model with DualTech VT is available on the on the 560-80 and offers a wide range of new features.



Drive mode.

Fully automatic transmission from 0 to 40kph; harnessing the automatic changeover from hydrostatic to Powershift.



Auto 2/4 wheel drive.

Switch from 4WD to 2WD at speeds above 19kph and vice versa when moving down to lower speeds.



Eco/Power mode.

Select between Eco mode for smoother and quieter applications or Power mode for arduous conditions.



Power brakes.

Provide proportional braking throughout the pedal travel, with positional repeatability providing safe, stable stopping.



Flexi mode.

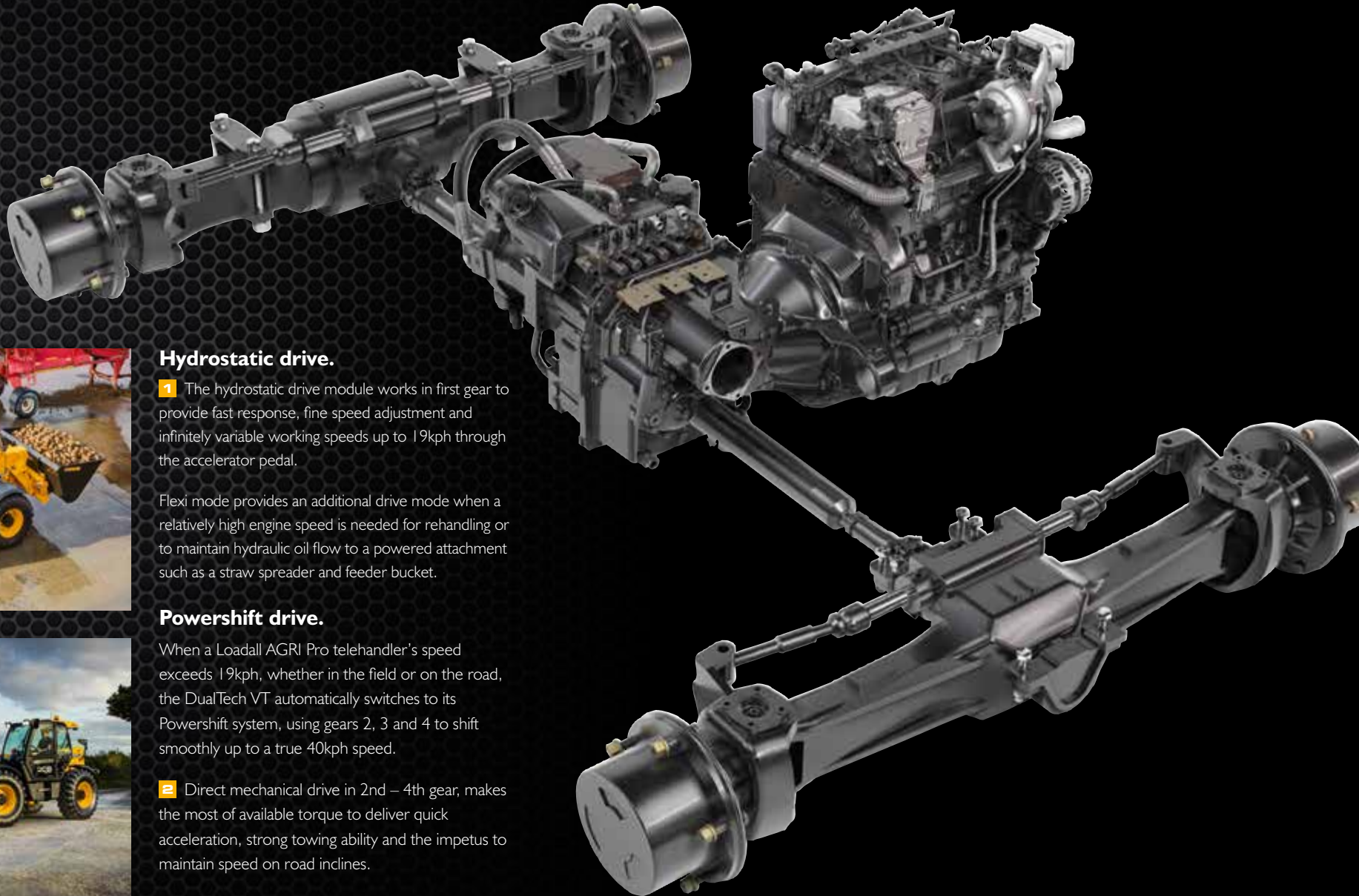
Provides independent engine speed and ground speed control.



Inching function.

Variably cuts off drive, through the first 30% of brake pedal travel, for intuitive multi-functioning during loading and rehandling.





Hydrostatic drive.

1 The hydrostatic drive module works in first gear to provide fast response, fine speed adjustment and infinitely variable working speeds up to 19kph through the accelerator pedal.

Flexi mode provides an additional drive mode when a relatively high engine speed is needed for rehandling or to maintain hydraulic oil flow to a powered attachment such as a straw spreader and feeder bucket.



Powershift drive.

When a Loadall AGRI Pro telehandler's speed exceeds 19kph, whether in the field or on the road, the DualTech VT automatically switches to its Powershift system, using gears 2, 3 and 4 to shift smoothly up to a true 40kph speed.

2 Direct mechanical drive in 2nd – 4th gear, makes the most of available torque to deliver quick acceleration, strong towing ability and the impetus to maintain speed on road inclines.

A REVOLUTION IN PRODUCTIVITY

DUALTECH VT™

WHEN IT COMES TO PRODUCTIVITY THE AGRI PRO HAS AN ADVANCED POWERTRAIN THAT BRINGS TOGETHER THE PROVEN POWER AND TORQUE OF THE 4.8-LITRE, JCB ECOMAX ENGINE AND THE EXCLUSIVE NEW DUALTECH VT.

The JCB AGRI Pro features the full Smart Hydraulics package as standard, which combined with the DualTech VT, improves cycle times by up to 25% when handling and 16% when towing on the road, compared to competitor machines.

1 Flexi Mode: This enables the operator to use the throttle pedal as a speed controller whilst setting engine speed and maximum forward speed independently for maximised efficiency and ease of use when rehandling or to maintain constant flow for hydraulically demanding attachments.

2 Power Mode: This provides an extra boost for arduous applications and provides more responsive direction control, acceleration and deceleration. Perfect for when the jobs needs to be done fast.

3 AUTO 2/4WD: This feature will switch the JCB AGRI Pro from 4WD to 2WD at speeds above 19kph and vice versa when moving down to lower speeds. 2WD is driven to the rear axles for better traction when towing.



A REVOLUTION IN EFFICIENCY

DUALTECH VT

THE NEW JCB AGRI PRO USES DUALTECH VT TO FULLY EXPLOIT THE POWER AND ECONOMY POTENTIAL OF THE JCB ECOMAX T4 FINAL ENGINE. COMBINED WITH JCB SMART HYDRAULICS, A MASSIVE 15% REDUCTION IN THE AMOUNT OF FUEL BURNED TO MOVE THE SAME AMOUNT OF MATERIAL VS THE COMPETITION.

Direct mechanical drive in gears 2-4, up to 40kph, reduces engine power losses through the transmission.

1 ECO Mode: This allows the machine to use less engine revs and consequently less fuel with quieter running, during applications where the full power potential of the engine does not need to be utilised.

2 Unique Smart Hydraulics makes the most out of every drop of precious fuel. Gravitational forces are harnessed to make boom lowering and retract more energy efficient.

The industry's most efficient engine. A 4.8-litre 108kW/145hp Tier 4 Final/Euro Stage IV and UN Stage 3 JCB EcoMAX with variable geometry turbo, as standard provides increased performance at low engine speed for improved cycle times and tractive effort.



2



1

A REVOLUTIONARY DRIVING EXPERIENCE

DUALTECH VT

WHEN THE CAB IS YOUR OFFICE AND GREATER COMFORT AND CONTROL EQUALS GREATER PRODUCTIVITY, THE ULTIMATE TELEHANDLER HAS OF COURSE, THE ULTIMATE DRIVING QUALITIES. THE JCB AGRI PRO FEATURES THE HIGHEST LEVELS OF COMFORT, EASY OPERATION AND CONTROLLABILITY YOU WILL FIND.

DualTech VT gives smoother and easier operation with automatic gear changes all the way from 0 to 40kph and back down again.

- 1** High spec cab for ultimate comfort and driving experience with fully adjustable suspension seat and steering column. Excellent air flow, ventilation and demisting. Single-lever, seat mounted servo control with proportional auxiliaries are quick, easy and comfortable to use.
- 2** DualTech VT reduces the need to use the brakes when rehandling. The new power brakes also feature an inching function which variably cuts off drive for intuitive multi-functioning during loading and rehandling.
- 3** High intensity 10x LED work lighting package provides 360 degree illumination plus superior vision in low light. The LED package includes cab mounted work lights, boom lights, hitch lights as well as interior light, number plate light, plus the option of LED road lighting.

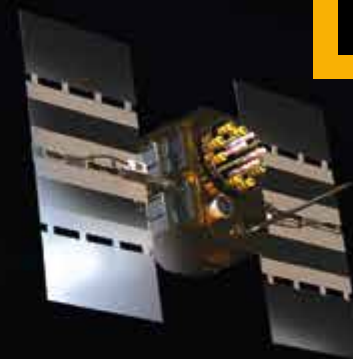


LIVELINK, WORK SMARTER.

LIVELINK IS AN INNOVATIVE SOFTWARE SYSTEM THAT LETS YOU MANAGE JCB MACHINES REMOTELY – ONLINE, BY EMAIL OR BY MOBILE PHONE. ACCESS EVERYTHING FROM MACHINE ALERTS TO FUEL REPORTS AND HISTORY INFORMATION, WITH ALL DATA STORED AT A SECURE CENTRE.

Productivity and cost benefits

By providing information like idle time monitoring and machine fuel consumption, JCB LiveLink helps reduce your fuel usage, saving money and improving productivity. Machine location information can help improve efficiency and even reduce insurance costs.



Maintenance benefits

Manage machine maintenance easily – accurate hours monitoring and service alerts improve maintenance planning, while real-time location data helps you manage your fleet. Critical machine alerts and maintenance history records are also available.



Security benefits

LiveLink's real-time geofencing alerts tell you when machines move out of predetermined zones, like the farm yard and real-time curfew alerts inform you of unauthorised usage. Further benefits include real-time location information, advanced ECU matching (pairs LiveLink with the immobiliser or ECU).



VALUE ADDED.

JCB'S WORLDWIDE CUSTOMER SUPPORT IS FIRST CLASS. WHATEVER YOU NEED AND WHEREVER YOU ARE, WE'LL BE AVAILABLE QUICKLY AND EFFICIENTLY TO HELP MAKE SURE YOUR MACHINERY IS PERFORMING TO ITS FULL POTENTIAL.

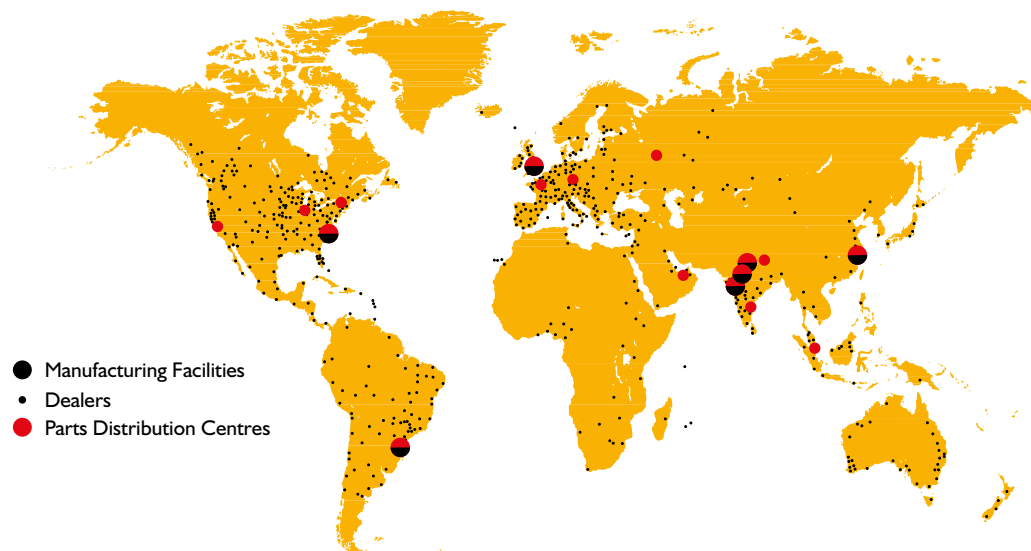


1 Our Technical Support Service provides instant access to factory expertise, day or night, while our Finance and Insurance teams are always on hand to provide fast, flexible, competitive quotes.

2 The global network of JCB Parts Centres is another model of efficiency; with 16 regional bases, we can deliver around 95% of all parts anywhere in the world within 24 hours. Our genuine JCB parts are designed to work in perfect harmony with your machine for optimum performance and productivity.



3 JCB Assetcare offers comprehensive extended warranties and service agreements, as well as service-only or repair and maintenance contracts. Irrespective of what you opt for, our maintenance teams around the world charge competitive labour rates, and offer non-obligation quotations as well as fast, efficient insurance repair work.



- Manufacturing Facilities
- Dealers
- Parts Distribution Centres

ATTACHMENTS.

FROM FORKS AND SHOVELS TO SPECIALISED AGRICULTURAL ATTACHMENTS, OUR GENUINE JCB ATTACHMENTS RANGE CAN BE PERFECTLY MATCHED TO ANY APPLICATION.



Shear grab.

Designed to cleanly cut grass and maize silage from the clamp, these units feature hardox or forged tines, a heavily reinforced construction and powerful action. The serrated front blades are individually replaceable to minimise repair costs.



Agricultural shovel.

High quality steel design with optional drilled toeplates to allow for additional bolt-on plates. Lightweight Domex material for maximum durability and productivity.



Multishovels.

Intelligent design and rigorous testing has ensured that these multishovels are tough enough to withstand many hours of hard work. As part of the JCB extensive testing process our prototype units have been put to work on multiple UK and European working farms.



Bucket brush.

High strength Domex steel means that our new bucket brush range is both hard wearing and built to last. A versatile tool which can be used to sweep and collect a large variety of materials such as mud, grain, slurry, aggregate and equine waste.

Powergrab.

The improved traditional tool for the stock farmer, these well-proven units are available in a range of sizes with options of forged or Hardox tines.



Grain pusher.

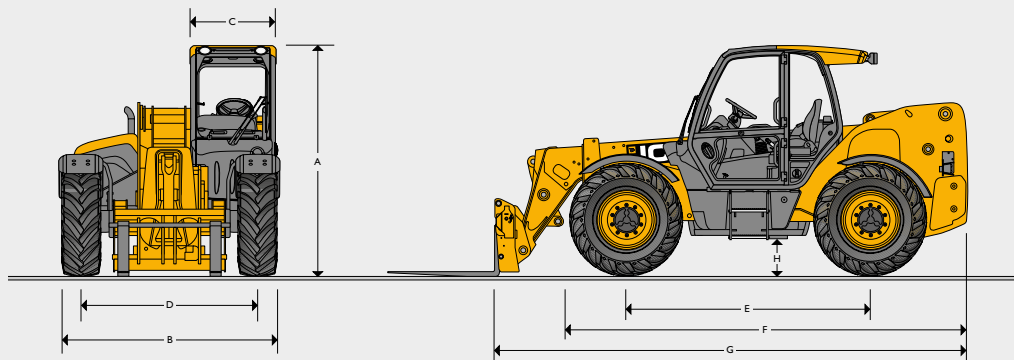
Used to make optimum use of grain store capacity, the grain pusher has a 2286mm (90in) blade and uses a tubular frame for strength and minimum weight. Especially useful for operating over above-floor drying ducts. No flat surfaces allows free fall of grain.



Grass forks.

Designed specifically for handling large volumes of grass for silage work, they feature a rear spill guard and hard wearing Hardox tines.

STATIC DIMENSIONS



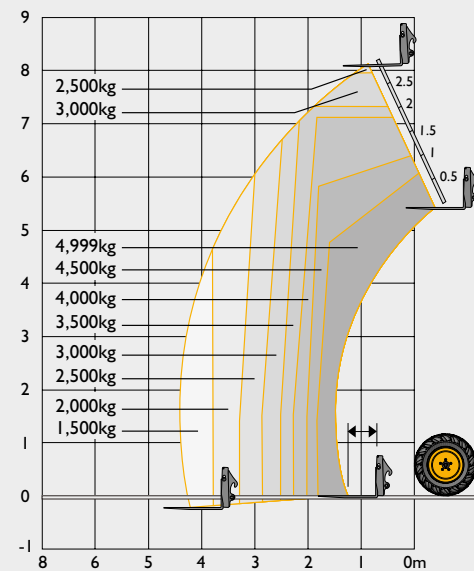
| | | | 550-80 | | | 560-80 | | |
|---|-------------------------------------|---------|--------------------|-----------------------|--------------------|--------------------|-----------------------|--------------------|
| A | Overall height* | m | 2.67 | 2.67 | 2.63 | 2.67 | 2.67 | 2.63 |
| B | Overall width (over tyres)* | m | 2.48 | 2.47 | 2.54 | 2.48 | 2.47 | 2.54 |
| C | Inside width of cab | m | 0.94 | | | | | |
| D | Front track | m | 1.98 | | | | | |
| E | Wheelbase | m | 2.75 | | | | | |
| F | Overall Length to front of tyres | m | 4.42 | | | | | |
| G | Overall length to front of carriage | m | 5.27 | | | | | |
| H | Ground clearance | m | 0.4 | | | | | |
| | Outside turn radius (over tyres) | m | 4.1 | | | | | |
| | Carriage rollback angle | degrees | 47 | | | | | |
| | Carriage dump angle | degrees | 33 | | | | | |
| | Weight** | kg | 10530 | | | 10775 | | |
| | Tyres | | XMCL 480/80 R26 | BibLoad 480/80 R26 | XMCL 500/70 R24 | XMCL 480/80 R26 | BibLoad 480/80 R26 | XMCL 500/70 R24 |

* Dependant upon tyre specified.

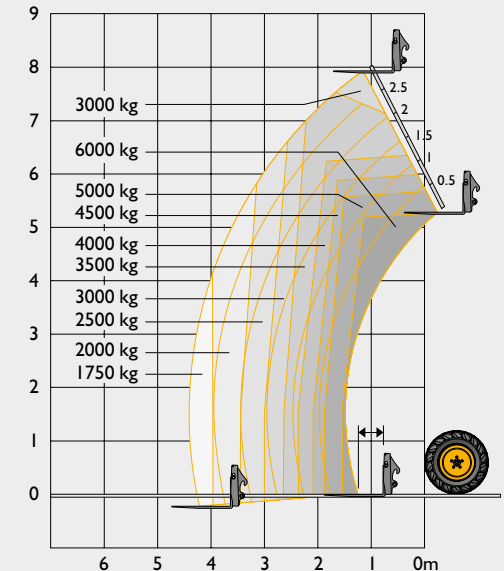
** Dependant upon tyre specified and machine specification.

LIFT PERFORMANCE

550-80



560-80



| | | 550-80 | 560-80 |
|------------------------------|----|--------|--------|
| Maximum lift capacity | kg | 4999 | 6000 |
| Lift capacity to full height | kg | 2500 | 3000 |
| Lift capacity at full reach | kg | 1500 | 1750 |
| Lift height | m | 8.1 | 7.9 |
| Reach at maximum lift height | m | 0.97 | 0.92 |
| Maximum forward reach | m | 4.47 | 4.41 |
| Reach with 1 tonne load | m | 4.47 | 4.41 |
| Placing height | m | 7.45 | 6.64 |

Complies with stability test EN 1459 Annex B.

| ENGINE | | |
|---|------------|--|
| Emissions level | | Tier 4 Final / Euro Stage IV or UN Stage 3 |
| Manufacturer | | JCB |
| Displacement | litres | 4.4/4.8 |
| No of Cylinders | | 4 |
| Bore size | mm | 103 / 106 |
| Stroke | mm | 132 / 135 |
| Aspiration | | turbocharged cooled |
| Power rating | | |
| Power @ 2200rpm | kW (hp) | 93 (125) / 108 (145) |
| Torque rating | | |
| Torque @ 1500rpm | Nm (lb/ft) | 550 (406) / 560 (413) |
| Engine oil service intervals | | 500 hours |
| After treatment (Not applicable to UN Stage 3 variants) | | SCR & DEF |

HYDRAULICS

AGRI Plus: Cab mounted single lever servo joystick, incorporating forward/neutral/reverse, with progressive extend/retract and One boom end auxiliary hydraulic service featuring constant flow facility.

AGRI Super /AGRI Pro: Seat mounted single lever servo joystick, incorporating forward/neutral/reverse, with progressive extend/retract and One boom end auxiliary hydraulic service featuring constant flow facility

| Operating system pressure | bar | 260 |
|---------------------------|---------|----------|
| Main hydraulics | l/min | 140 |
| Pump | l/min | Variable |
| Hydraulic cycle times | seconds | |
| | 550-80 | 560-80 |
| Boom raise | 7.4 | |
| Boom lower | 5.9 | 8.3 |
| Extend | 8.3 | |
| Retract | 5.9 | |
| Bucket dump | 2.8 | |
| Bucket crowd | 3 | |

ELECTRICAL SYSTEM

| | | |
|---|----------|-----|
| System voltage | Volt | 12 |
| Alternator output | Amp hour | 150 |
| Battery capacity | Amp hour | 220 |
| Full road lighting. Reversing light. Directional indicators. Hazard warning. Reverse alarm. | | |

SERVICE CAPACITIES

| | | |
|-----------------------|--------|------|
| Fuel tank | litres | 146 |
| Hydraulic tank | litres | 112 |
| Engine oil sump | litres | 14 |
| Engine coolant system | litres | 23 |
| DEF tank | litres | 20.8 |

NOISE AND VIBRATION

| | | Measurement conditions |
|---------------------------------------|--------|---|
| Noise at the operator station (LpA) | 78dB | In accordance with ISO6369 in a test defined in 2000/14/EC |
| Noise emission from the machine (LWA) | 107dB | External noise determined in accordance with test defined in 2000/14/EC |
| Whole body vibrate emission | 0.42m² | In accordance with ISO 2631-1:1997 |

SAFETY CHECK VALVES

Fitted to carriage tilt, telescopic and boom lift rams.

TRANSMISSION

AGRI Plus: JCB Powershift transmission incorporating torque converter, bevel box and a 4 speed powershift gearbox in one resiliently mounted unit. Operating modes: Manual gear shift incorporated onto the single lever joystick with 4 forward and 4 reverse powershift gears. Travel speed 37kph. Electrical 2/4 wheel drive disconnect. Switchable transmission disconnect on brake pedal.

AGRI Super: JCB Autoshift transmission incorporating torque converter, bevel box and 6-speed powershift gearbox with TorqueLock in 5th and 6th gear in one resiliently mounted unit. Operating modes: Manual and Auto gear shifts incorporated onto the single lever joystick with 6 forward and 4 reverse powershift gears. Travel speed 40kph. Electrical 2/4 wheel drive disconnect. Auto selection between 4th and 6th gear in Auto mode. Switchable transmission disconnect on brake pedal.

AGRI Pro: JCB DualTech Variable Transmission incorporating bevel box, combining Hydrostatic and 3 speed direct drive mechanical powershift gearbox with Flexi mode in one resiliently mounted unit. Operating modes: Flexi mode, Manual and Auto Drive (D), gear shift incorporated onto the single lever joystick with 1 forward and 1 reverse Hydrostaic and 3 forward powershift gears. Travel speed 40kph. Auto 2/4 wheel drive disconnect Auto selection when in Drive (D) mode. Permanent inching function on the brakes pedal.

AXLES

AGRI Plus / AGRI Super: Front and rear drive: JCB epicyclic hub reduction drive/steer axles with Max-Trac torque proportioning differentials. When 2WD - front axle drive.

AGRI Pro: Front and rear drive: JCB epicyclic hub reduction drive/steer axles with Front: Limited Slip Differential (LSD) and Rear: Max-Trac torque proportioning differential. When 2WD - rear axle drive.

BRAKES

Service brakes: Hydraulically activated "Power Brakes", self-adjusting, oil-immersed in-board multi-disc type on front axle.

Parking brake: SAHR (Spring Applied Hydraulic Release) park brake.

Trailer brakes: Twin line hydraulic trailer brakes and Electronically controlled Braking System.

BOOM AND CARRIAGE

Boom is manufactured from high tensile steel. JCB Q-fit self-levelling carriage with lever operated pin locking accepts pallet forks and a wide range of attachments.

STEERING

Hydrostatic power steering with power track rods on both axles. Three steer mode options: front wheel steer; all wheel steer; crab steer: operated from in the cab by a selection switch, with automatic alignment.

DELUXE CAB

Quiet, safe and comfortable cab conforms to ROPS ISO 3471 and FOPS ISO 3449. Tinted glass all round with laminated front and roof screen. Roof bars, front, rear and roof screen wash/wipe and heater/screen demister. Opening rear window. Audio-visual warning system for coolant temperature, water in fuel, engine oil pressure, air cleaner, battery charge, transmission oil temperature and pressure. Hourmeter and road speed indicator. Engine temperature, fuel gauge and clock. Adjustable steer column with stalk bar forward reverse shuttle. Adjustable deluxe suspension seat with adjacent park brake. Automatic eye level audio-visual load moment indicator warning system receiving a signal from a load sensor on the rear axle. This system continuously monitors the machine's forward stability and leaves the operator in control at all times.

OPTIONS & ACCESSORIES

Work lighting, rotating flashing beacon, fire extinguisher, Traction, Floation and Ag Industrial tyre tread patterns, windscreen and roof guard, front and roof screen blind, radio kit, cab clean air kit, towing facility with trailer lighting package, 2nd boom auxilliary.

Attachments: Contact your local dealer for details of the comprehensive range.

Adaptive load control for EU territories conforms to EN15000.

Note - some options are territory dependant.

AGRIPLUS AGRISUPER AGRIPRO
OPTIONS

| Model | 550-80 / 560-80 | 560-80 | 560-80 |
|--|-----------------|--------|--------|
| Engine and gearbox | | | |
| 93kW / 125hp | ● | – | – |
| 108kW / 145hp | ○ | ● | ● |
| 33kph Powershift (4-speed) | ● | – | – |
| 40kph Autoshift (6-speed) (Incorporating TorqueLock in 5th and 6th gear) | – | ● | – |
| 40kph DualTech Variable Transmission, (Combine Hydrostatic and Mechanical Drive with Flexi Mode) | – | – | ● |
| Features | | | |
| Electrical 2/4WD disconnect | ● | ● | – |
| Auto 2/4WD disconnect | – | – | ● |
| Double acting rear hydraulic auxiliary | ● | ● | ● |
| Smart hydraulics | | | |
| Regenerative hydraulics (lower and retract) | ● | ● | ● |
| End damping (lift and retract) | ● | ● | ● |
| Quick auxiliary venting | ● | ● | ● |
| Bucket control system | ● | ● | ● |
| Auto SRS | ○ | ● | ● |
| High flow auxiliary | ● | ● | ● |
| Options | | | |
| Twin front auxiliaries | ○ | ○ | ○ |
| Twin rear auxiliaries | ● | ● | ● |
| Seat – Air suspension and heated | ○ | ○ | ● |
| Seat mounted joystick | ○ | ● | ● |
| Auto reversing fan | ○ | ○ | ● |
| Air conditioning | ○ | ○ | ● |
| 2-speed and intermittent wash/wipe | ○ | ○ | ● |
| Remote centralised rear grease points | ○ | ○ | ● |
| Boom Ingress protection kit | ○ | ○ | ● |
| Transmission belly guard kit | ○ | ○ | ● |
| Limited slip differential in front axle | ○ | ○ | ● |
| Large bore exhaust | – | – | ○ |
| Lighting | | | |
| LED work lights – cab (2 front and 2 rear) | ○ | ○ | – |
| LED work lights – boom | ○ | ○ | – |
| LED rear hitch light | ○ | ○ | ● |
| 360° LED Worklight Package (Extra worklights on front and rear) | – | – | ● |
| LED interior light | – | – | ● |
| LED number plate light | – | – | ● |
| LED road light package – front and rear road lights | – | – | ○ |

Standard ● ○ Option – Not applicable –
(Some options are territory dependant)







ONE COMPANY, OVER 300 MACHINES.

Your nearest JCB dealer

AGRI LOADALL 550-80/560-80

Gross power: 93–108kW (125–145hp) Lift capacity: 4,999kg – 6,000kg Lift height: 7.9m – 8.1m

JCB Agriculture, Rocester, Staffordshire ST14 5JP.

Tel: +44 (0)1889 590312 Email: salesinfo@jcb.com

Download the very latest information on this product range at: www.jcb.com

[facebook.com/JCBAg](https://www.facebook.com/JCBAg) [@JCBAgriculture](https://twitter.com/JCBAgriculture) [youtube.com/JCBAgriculture](https://www.youtube.com/JCBAgriculture)

©2014 JCB Sales. All rights reserved. No part of this publication may be reproduced, stored in a retrieval system, or transmitted in any form or by any other means, electronic, mechanical, photocopying or otherwise, without prior permission from JCB Sales. All references in this publication to operating weights, sizes, capacities and other performance measurements are provided for guidance only and may vary dependant upon the exact specification of machine. They should not therefore be relied upon in relation to suitability for a particular application. Guidance and advice should always be sought from your JCB Dealer. JCB reserves the right to change specifications without notice. Illustrations and specifications shown may include optional equipment and accessories. All images are correct at time of print. The JCB logo is a registered trademark of J C Bamford Excavators Ltd.

9999/5957 en-GB 08/18 Issue 2 (T4F & UN3)

